

MONDAY, MARCH 30, 2026

LEADING FOR NETWORK HEALTH: SELECTING TOOLS AND PLANNING YOUR IMPROVEMENT ROUTINES

FACILITATORS



Jen Sherer

Research Associate,
Learning Sciences
and Policy Program

Partners for
Network
Improvement,
The University of
Pittsburgh



Angel Li

Assistant Director,
Impact Lab

The Carnegie
Foundation for the
Advancement of
Teaching



Carnegie Foundation
for the Advancement of Teaching



Kiran Purohit

Vice President,
Curriculum &
Instruction

New Visions for
Public Schools



Russell West

Director of
Curriculum &
Instruction

New Visions for
Public Schools



WHO IS IN THE ROOM?



0-1 year



2-3 years



>3 years

OBJECTIVES

After this session, attendees will be able to:

- Explore the significance of leveraging data on the improvement enterprise and environmental contexts to advance network development, illustrated through a real-life case
- Identify network health measures to support network improvement
- Build or strengthen network improvement routines, for any kind of improvement effort

AGENDA

- 1 Evidence for Improvement Framework
- 2 Improvement Health and Development Framework
- 3 Case Study
- 4 Network Health Survey



COMMUNITY NORMS

Join in creating a brave space that is safe for learning and growth.

Celebrate the work and push on the work. Be candid and curious, even when it is uncomfortable.

Treat this space as a reunion and a welcome.

If you are a returner, welcome new people in. If you are new, contribute!

Center your why and bring your joy.

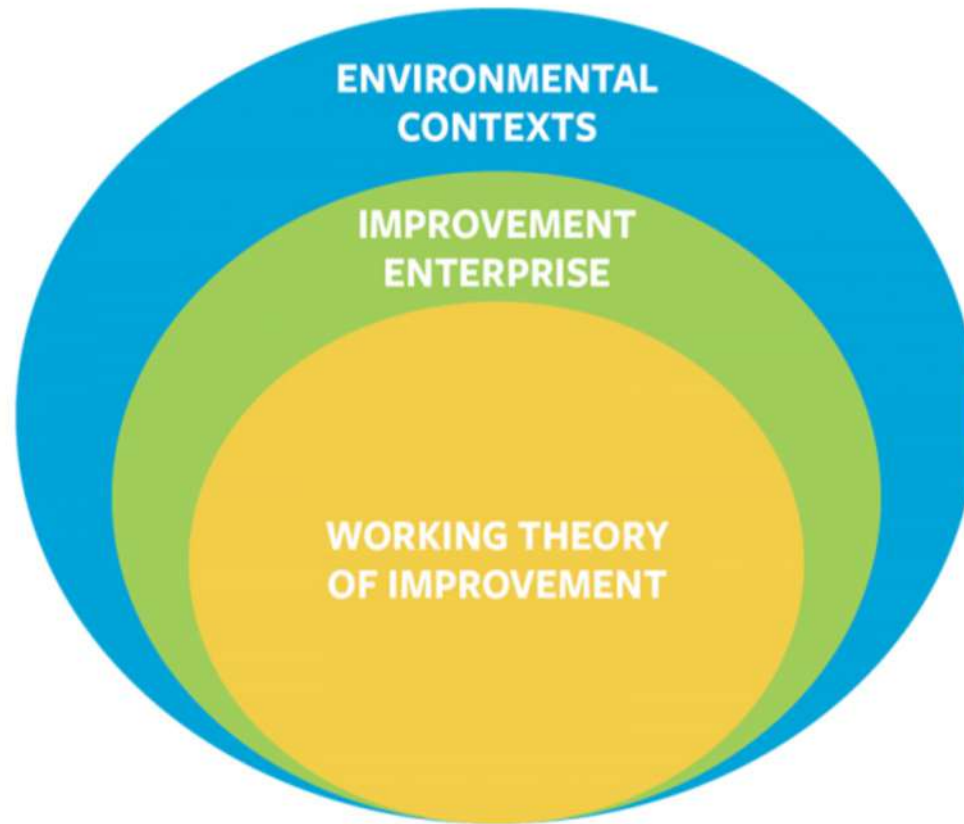
Keep the students and families we serve at the center of all we do.

Be bold.

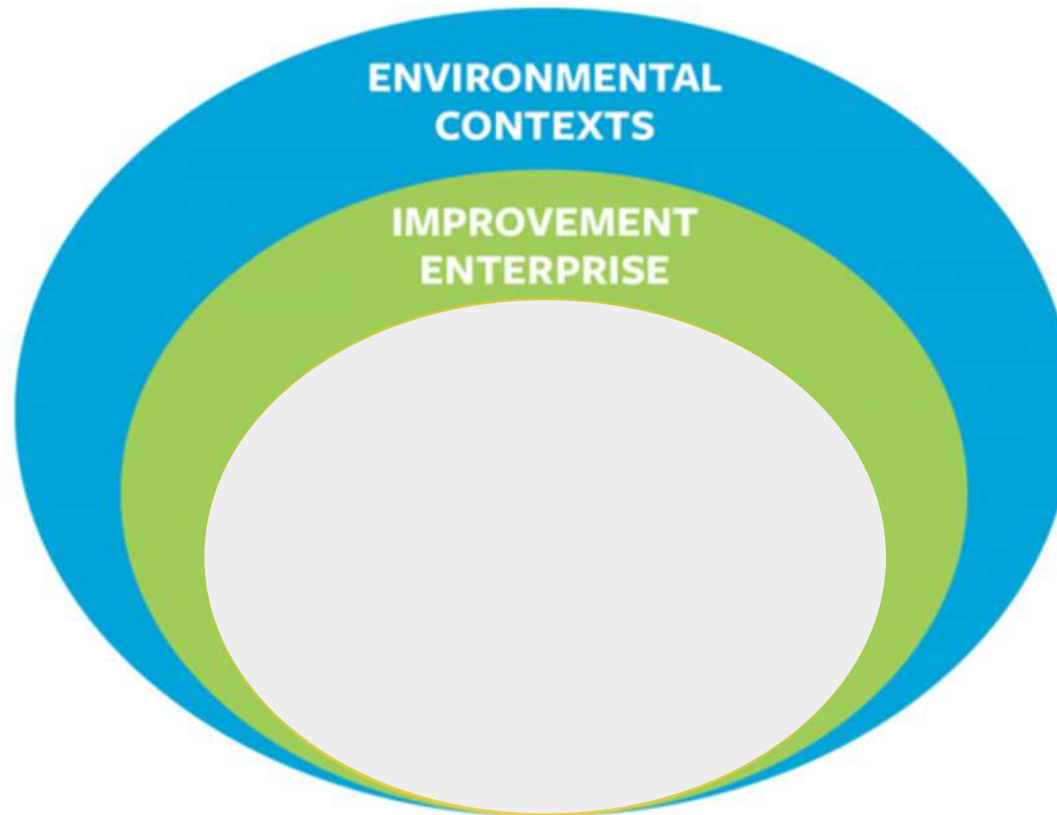
Bring your ideas and your energy to our collective work of building the field of improvement today and after.

EVIDENCE FOR IMPROVEMENT FRAMEWORK

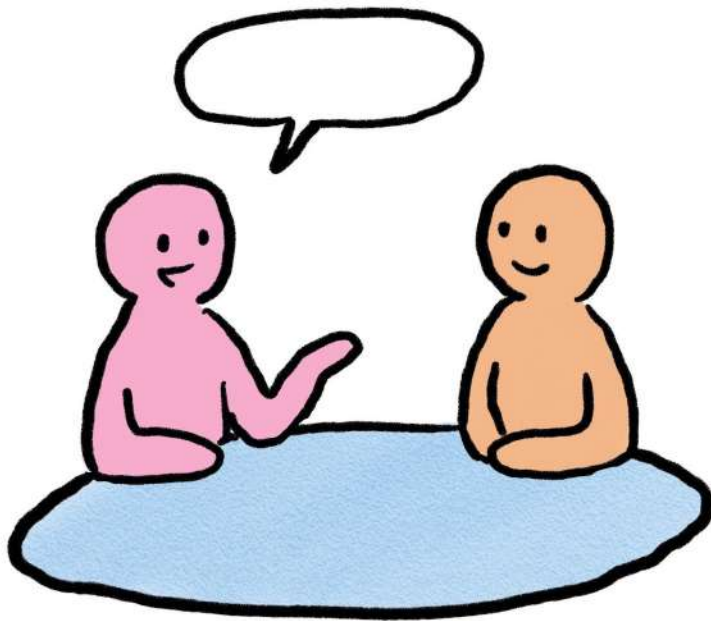
EVIDENCE FOR IMPROVEMENT FRAMEWORK



EVIDENCE FOR IMPROVEMENT FRAMEWORK



TURN AND TALK



SAY HELLO

Introduce yourself!

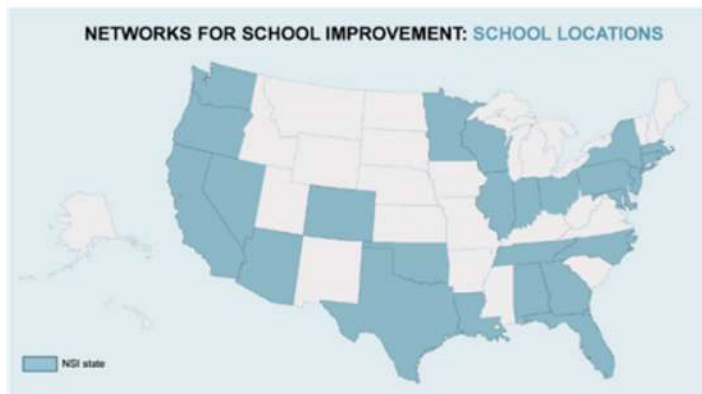
REFLECT ON THESE THREE LEVELS OF EVIDENCE.

What resonates? Where does your team have evidence, and where does it need more?

IMPROVEMENT NETWORK HEALTH AND DEVELOPMENT FRAMEWORK

STUDY CONTEXT: NETWORKS FOR SCHOOL IMPROVEMENT INITIATIVE

The Gates Foundation



- 38 networks of middle and high schools across 23 states
- Nearly 600 schools in 155 school districts serving more than 150,000 students
- 300 million+ investment in NSIs plus another ~35 million in support ecology & evaluations

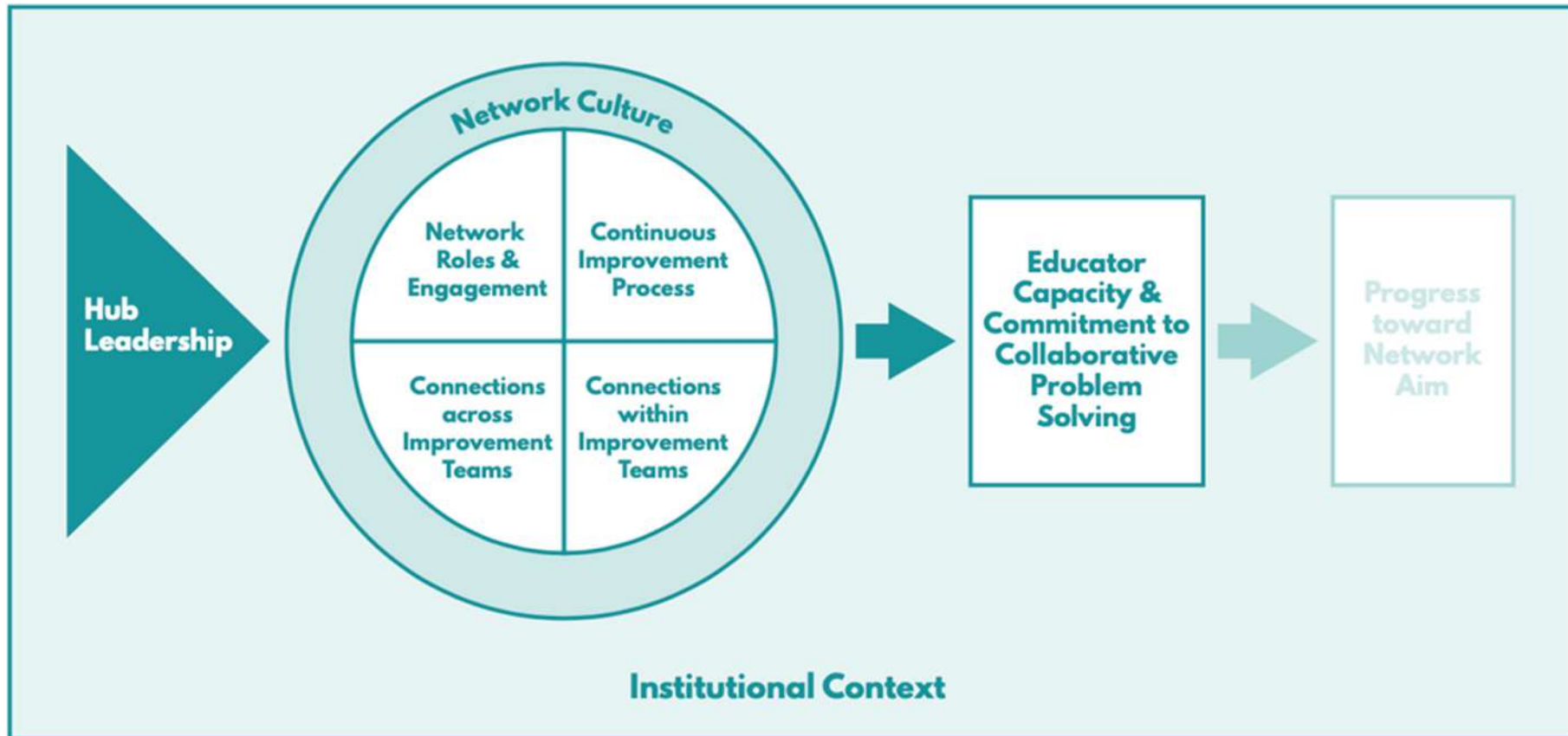
IMPROVEMENT NETWORK DEVELOPMENT

NETWORK HEALTH PROJECT

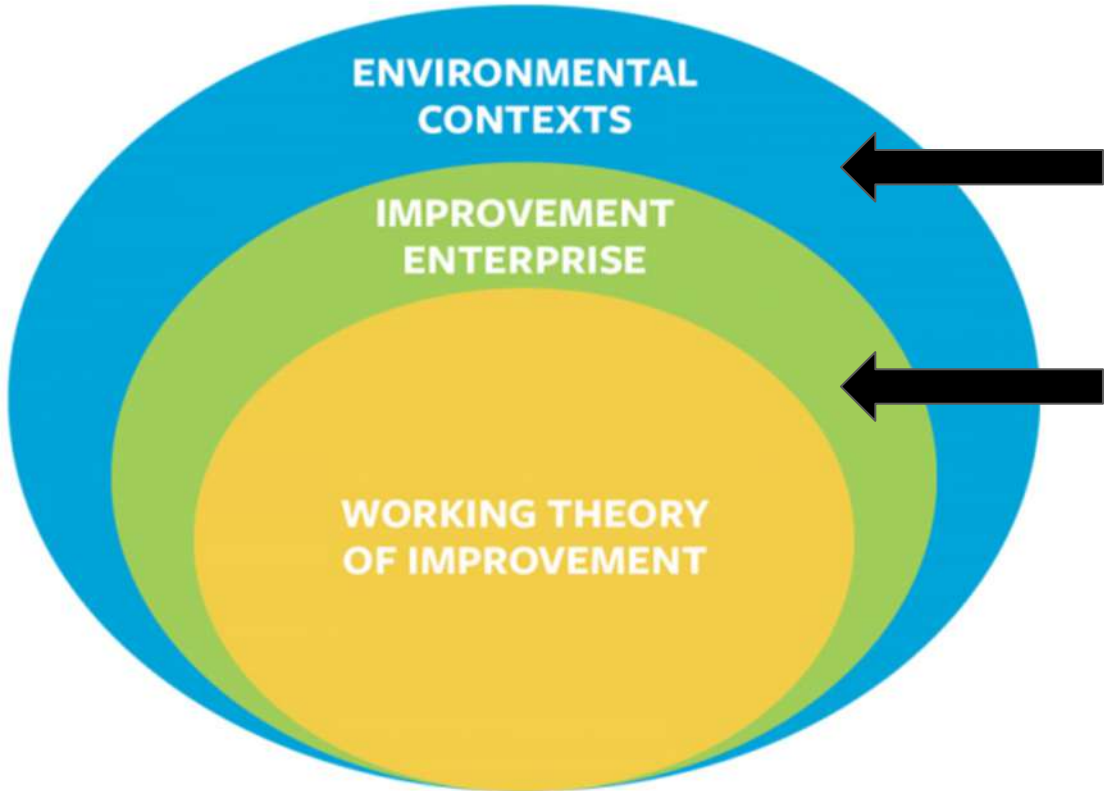
- Conceptualize and measure “network health and development” in partnership with the Gates Foundation
- Provide actionable data to network leaders and the foundation to support network development
- Mixed methods longitudinal study of the development of a large sample of improvement networks



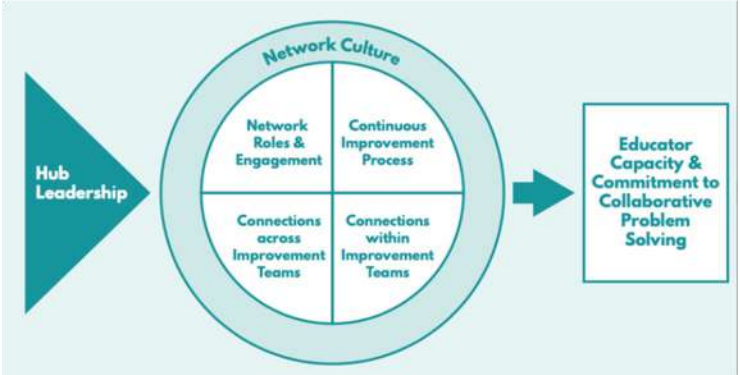
IMPROVEMENT NETWORK HEALTH AND DEVELOPMENT FRAMEWORK



EFI & INHDF



Equity, Contexts for Improvement



CASE STUDY

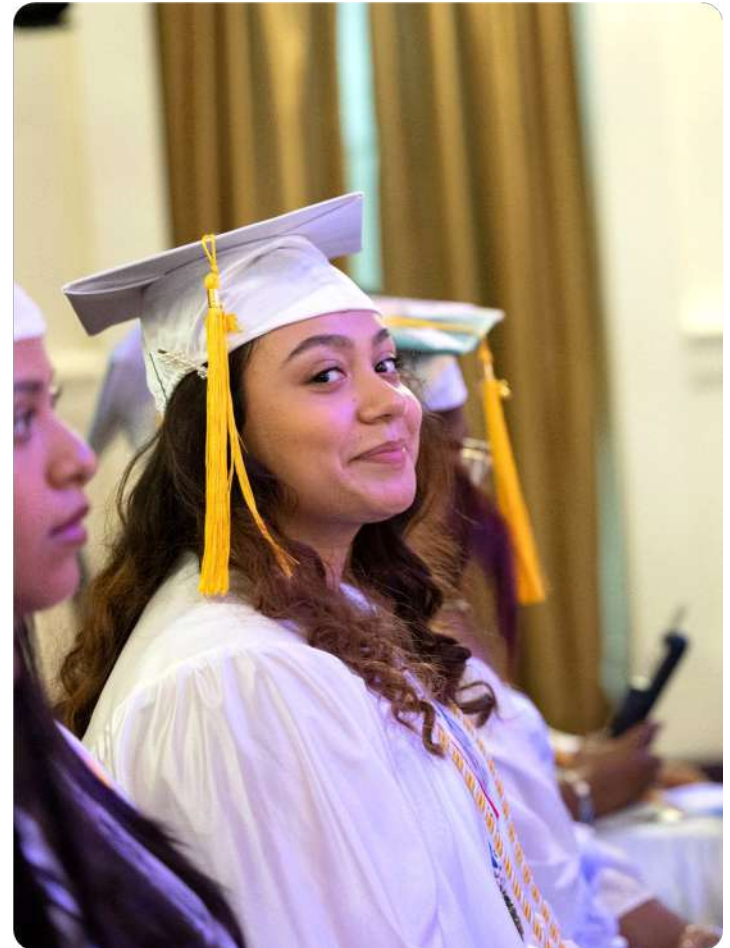
OUR MISSION

New Visions builds systems to reduce educational inequity and expand opportunities for students in public schools.



OUR VISION

All students have access to public schools that prepare them to thrive academically, socially, and as engaged members of society.



OUR WORK

The Portal

A student planning and school management tool that leverages data to empower the work of schools and their partners

Postsecondary Readiness

Programs that prepare students for college and career

Curriculum

Full-course instructional materials and curriculum-based professional learning, *including instruction-focused school improvement networks*

Affinity School Improvement Network

Support for 71 NYC Public High Schools through systems improvement coaching



Background on

INSI

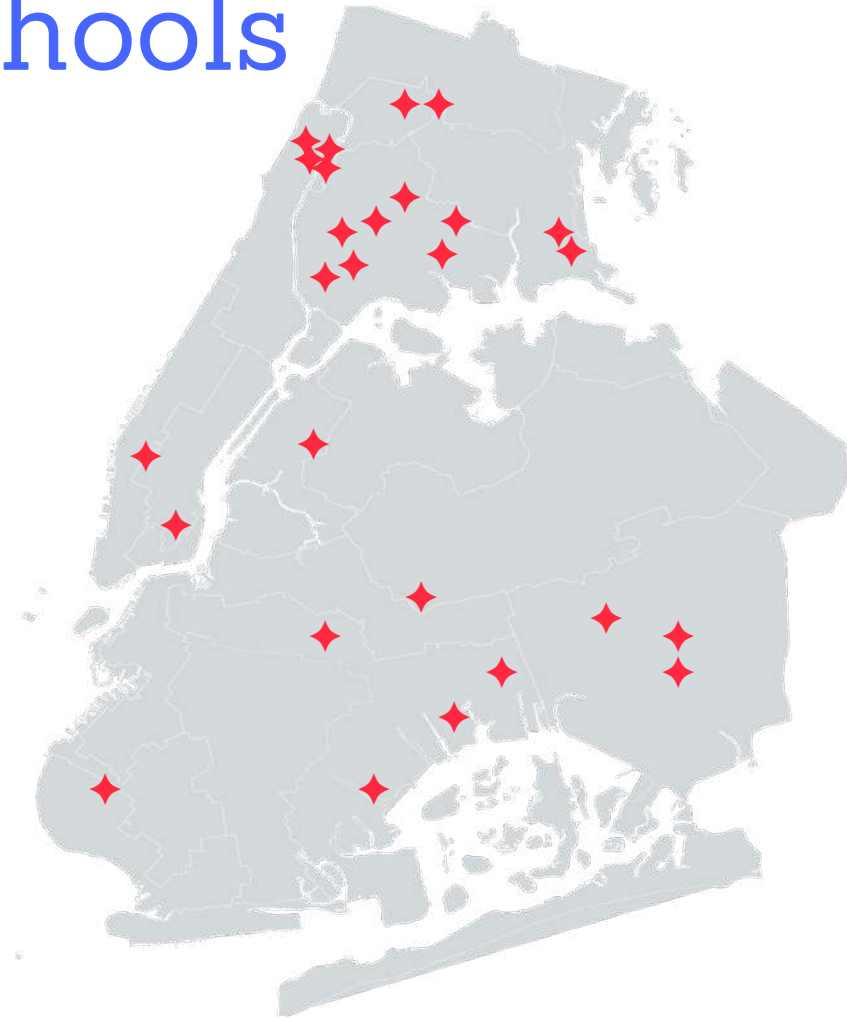
Instructional Network *for* School Improvement

- Instructional Network for School Improvement at New Visions for Public Schools
- Started with 18 schools in SY 2020-2021 and grew to 23 schools in SY 2024-25
- Focus on improving 9th grade College Readiness in mathematics
- A network built online during COVID, then in person over the subsequent years
- Administered the Network Health Survey each year, in the Spring



Location of INSI Schools

- **23** high schools
- **1-2** improvement teams per school
- **4** boroughs
- **7** NYC PS superintendencies
- **3,641** 9th-grade students



INSI Aim and Primary Drivers

By 2025, all schools in INSI will have a college ready rate at or above 72%, across all subgroups.

Students are attending school consistently.

Students feel belonging in math class and in school.

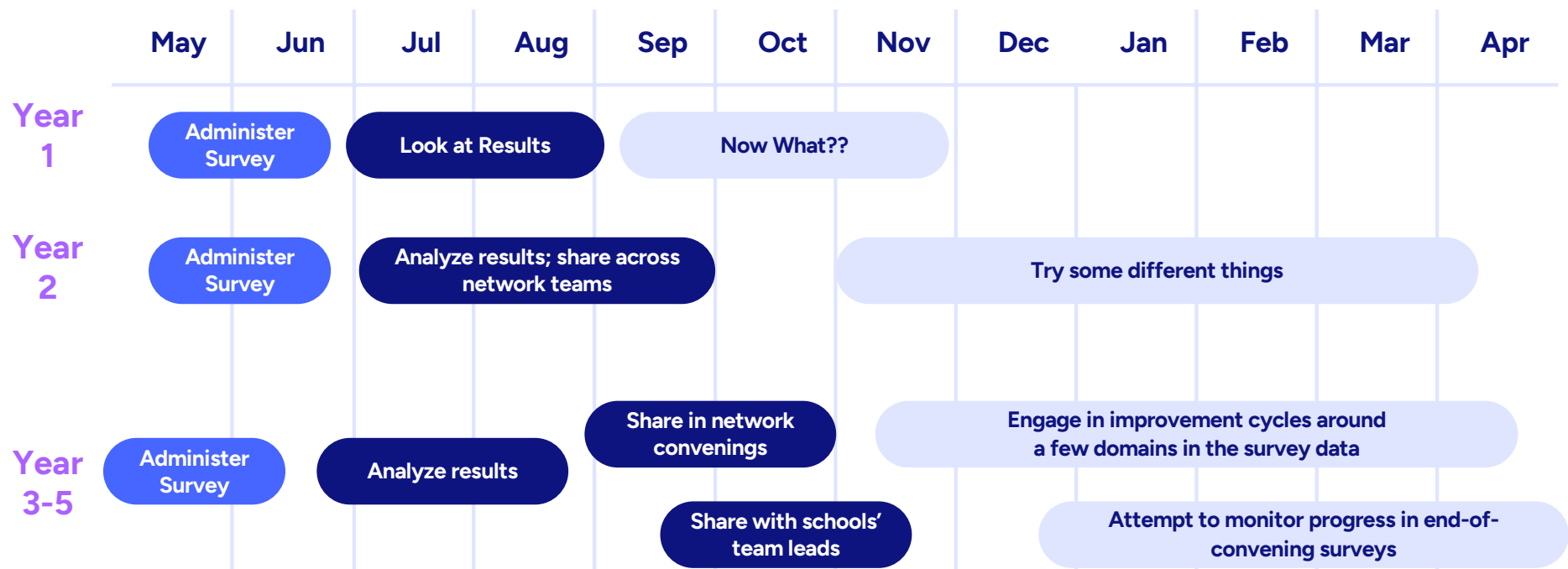
Students engage in *Illustrative Mathematics*, a problem-based math curriculum.

Students engage in additional supports for topics that require it.

A school's master program prioritizes needs for Algebra I.



Network Health Routines in INSI

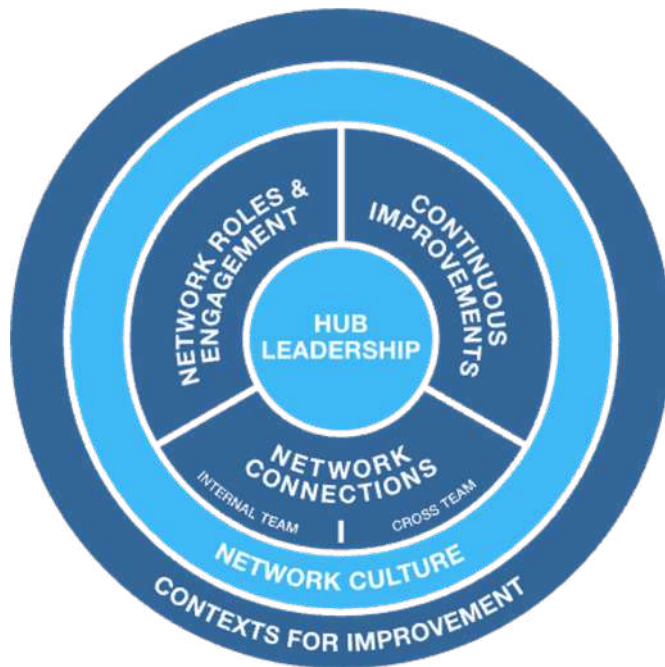


Dive into INSI Data

- Select a Spring 2024 visual to investigate:
 - ◆ Network overview (showing all domains)
 - ◆ Network Connections domain
 - ◆ Contexts for Improvement domain
- Work in groups of 3 to annotate the visuals.
What **patterns** do you notice?
- What **changes** might you take on as network hub team to improve the overall health, or a specific domain?
- How would you know if those changes are an **improvement**?



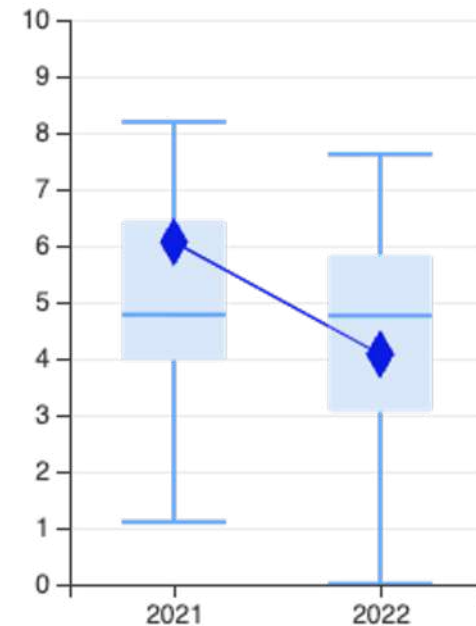
Reading the “Bullseye” and Box Plot



- Emerging
- Developing
- Achieving
- Not applicable



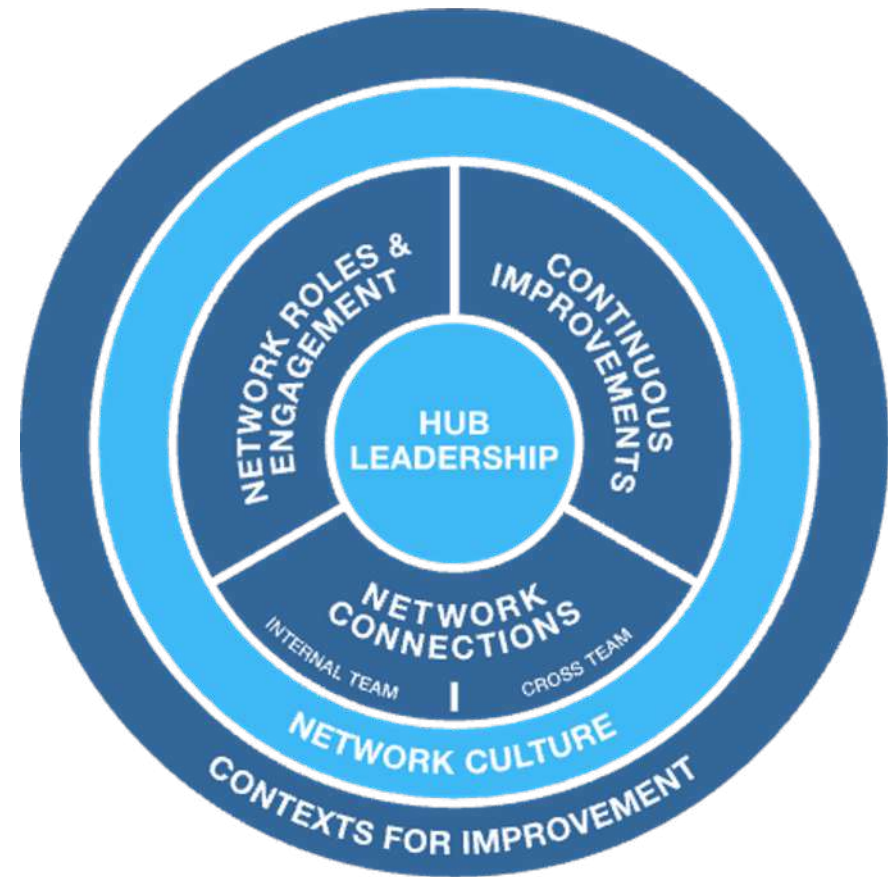
Internal Team Connections:
Team Norms



	2021	2022
— Median	4.78	4.76
◆ Score	6.07	4.08

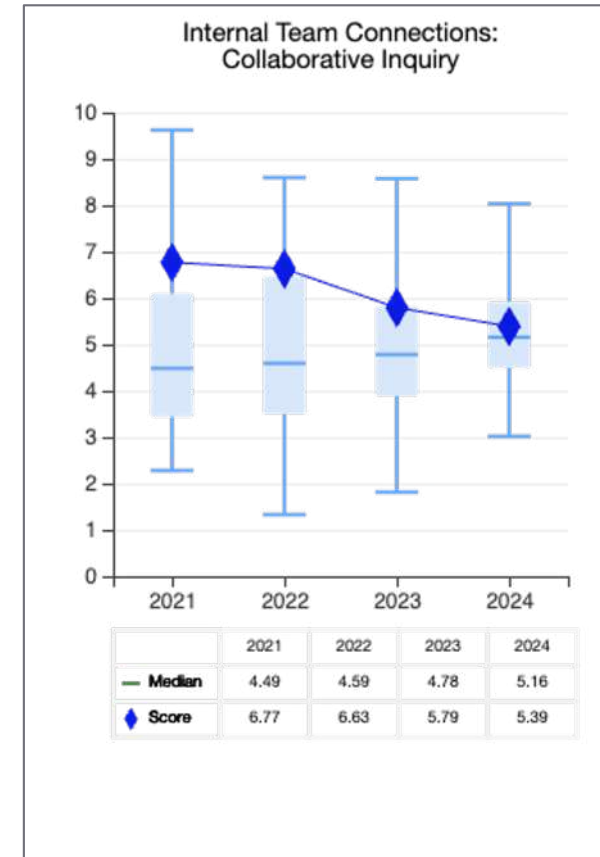
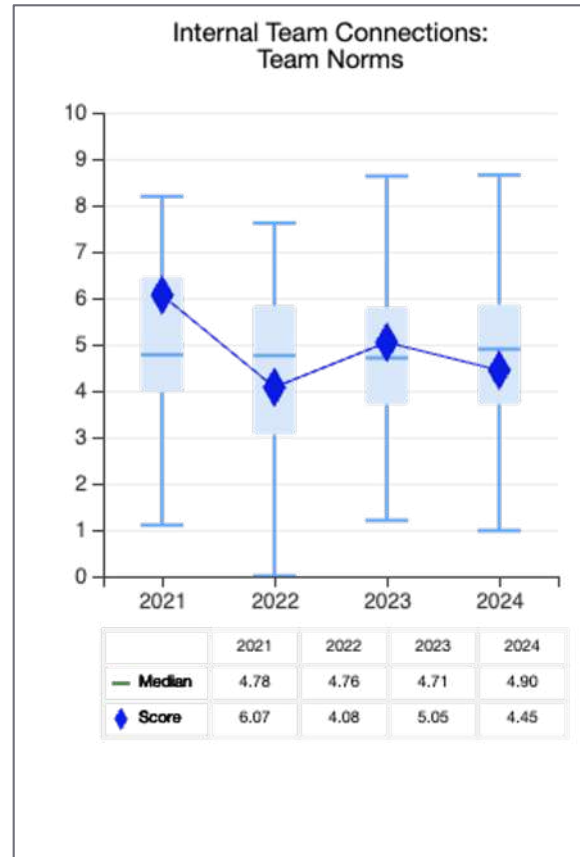
Overall Summary

Spring 2024

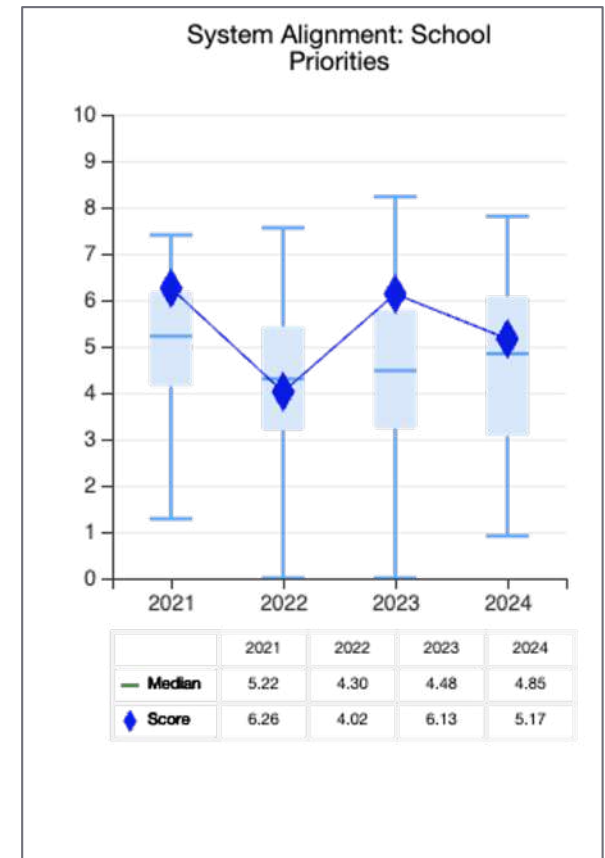
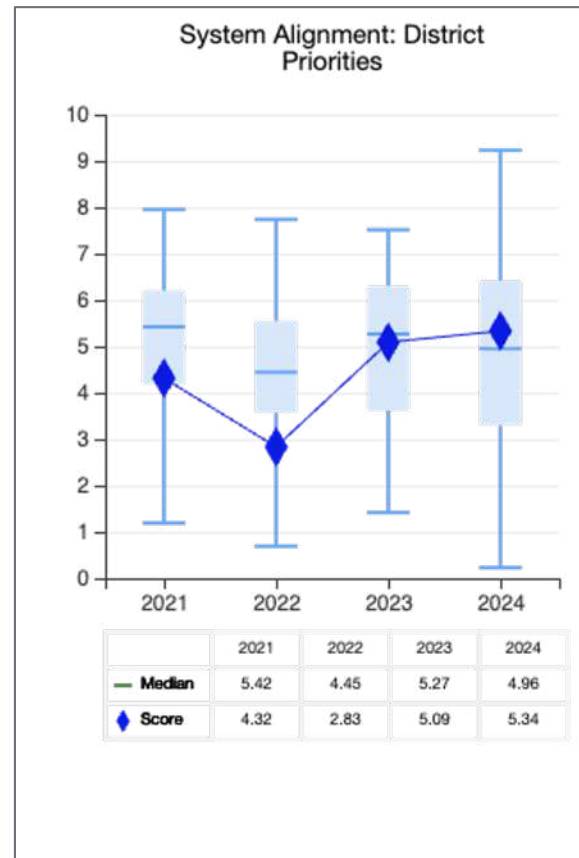


Network Connections

Spring 2024



Contexts for Improvement Spring 2024



Dive into INSI Data

- Select a Spring 2024 visual to investigate:
 - ◆ Network overview (showing all domains)
 - ◆ Network Connections domain
 - ◆ Contexts for Improvement domain

- Work in groups of 3 to annotate the visuals. What **patterns** do you notice?

- What **changes** might you take on as network hub team to improve the overall health, or a specific domain?

- How would you know if those changes are an **improvement**?



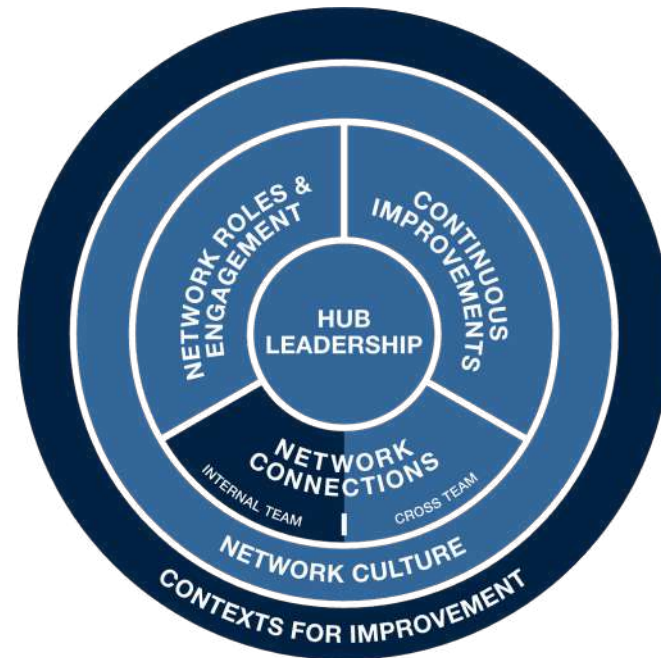
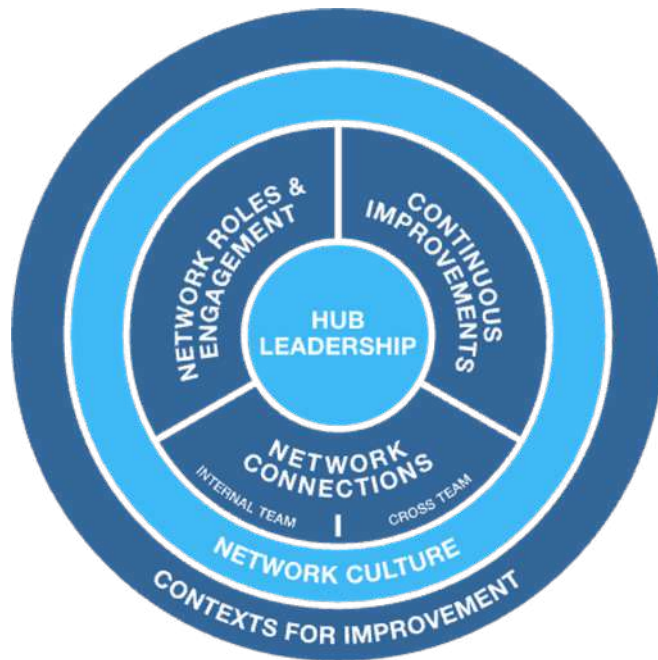
Improvements from Spring 2024 to Spring 2025

Change Ideas	System Alignment - District Priorities	Team Connections	System Alignment - School Priorities
Organizing our time to better support data and team leads at each school site	✓		✓
Setting up time with each district team; discussing progress across districts as a hub team	✓		
Prioritizing Contexts for Improvement over other domains	✓	✓	
Prioritizing Internal Team Connections for sustainability		✓	✓
Supporting teams to submit weekly reports on CI work.		✓	✓



Overall Summary

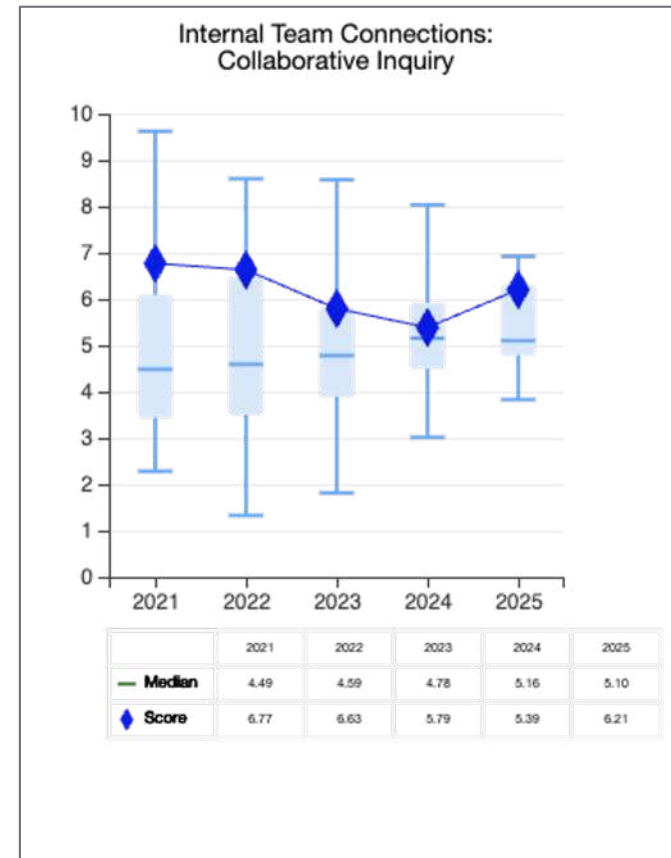
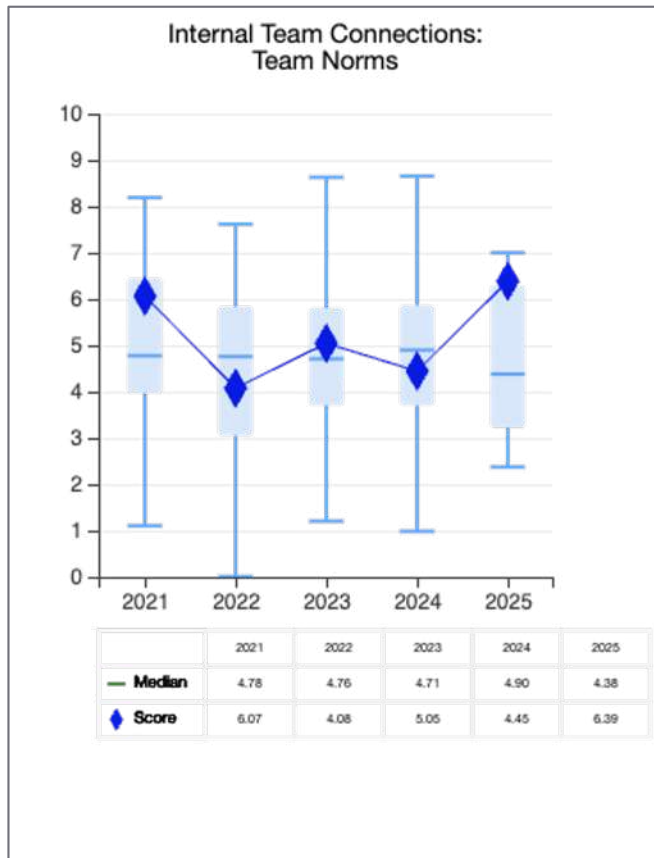
Spring 2024 vs. Spring 2025



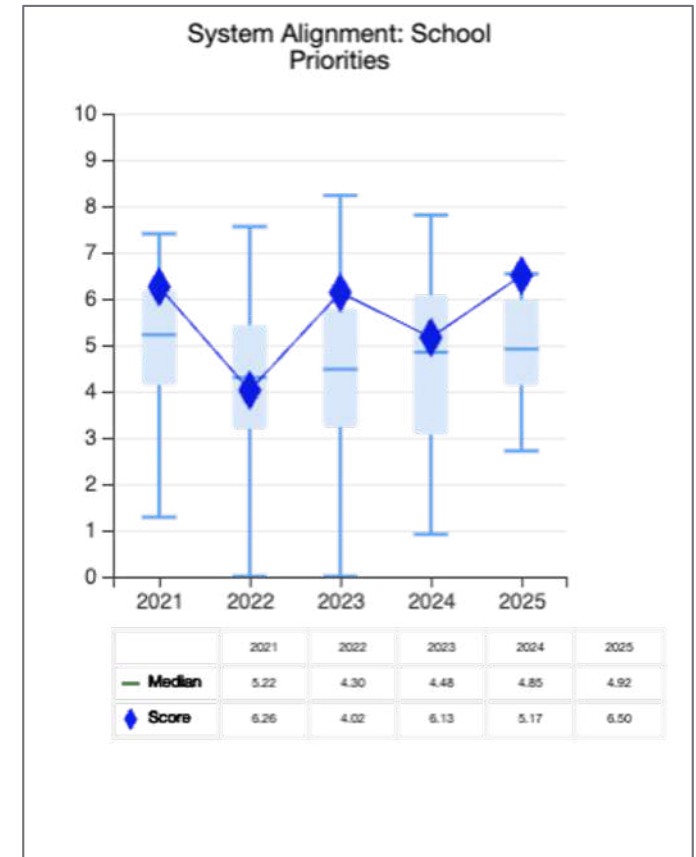
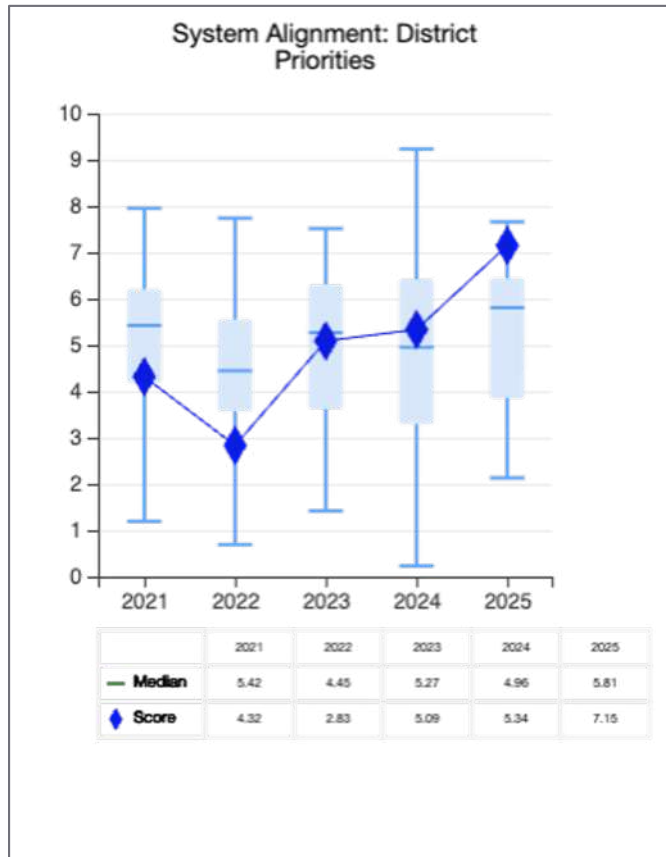
■ Emerging ■ Developing
■ Achieving ■ Not applicable

Network Connections (Internal Team)

Spring 2024 vs. Spring 2025

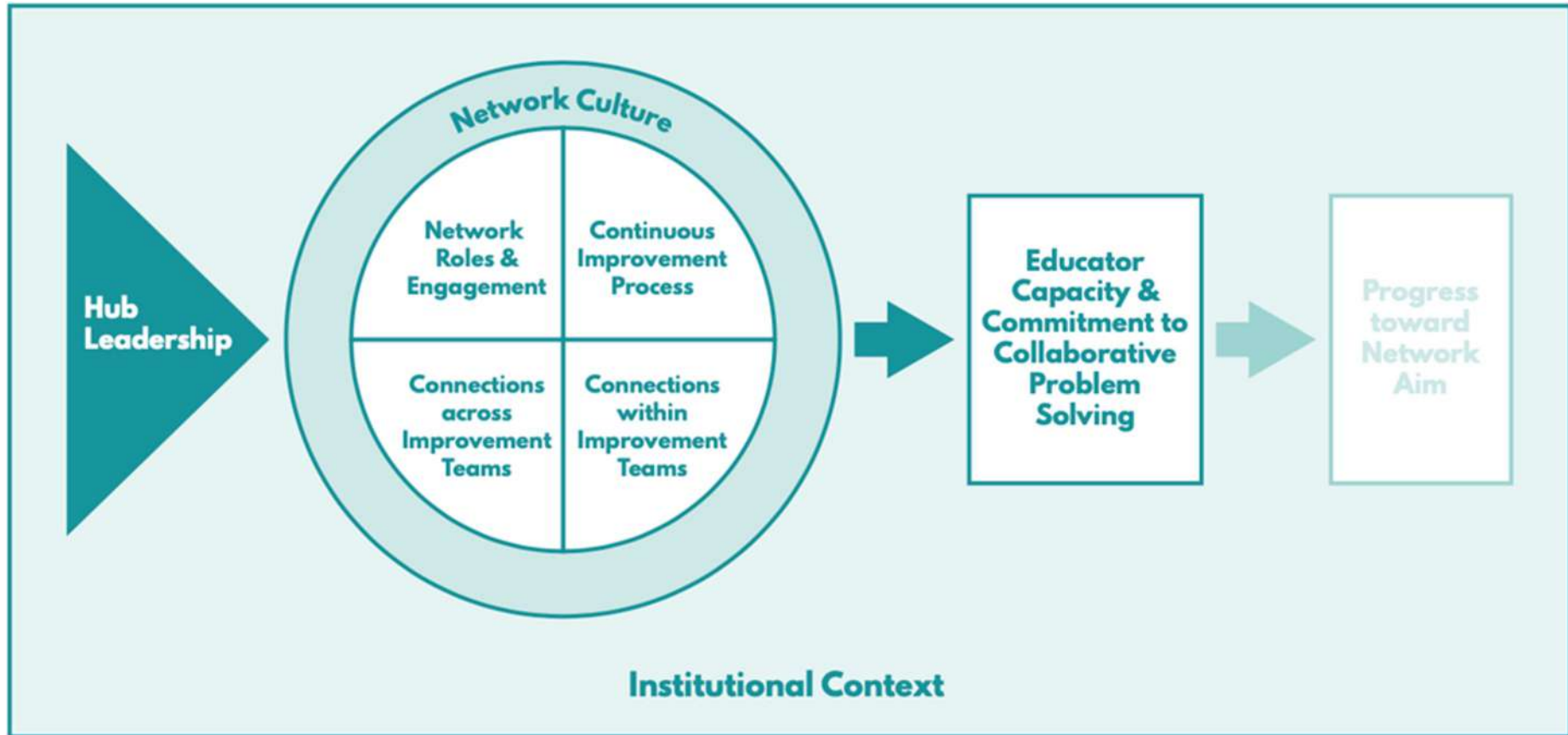


Contexts for Improvement Spring 2024 vs. Spring 2025



Network Health Survey

IMPROVEMENT NETWORK HEALTH AND DEVELOPMENT FRAMEWORK





Partners for Network Improvement

Research, Strategy, & Evaluation

Learning Research and Development Center
University of Pittsburgh & Vanderbilt Peabody College

In collaboration with,



Carnegie Foundation
for the Advancement of Teaching

EXPLORE THE NETWORK HEALTH SURVEY

Take a few minutes to read through the survey questions independently.

Turn to an elbow partner and discuss:

- Which area of network health would you most like to improve?
- What are you wondering about the survey?

A woman with dark hair pulled back, wearing a bright yellow t-shirt, is shown from the chest up. She has a thoughtful expression, with her hand resting on her chin and her gaze directed upwards and to the left. The background is a solid, vibrant yellow. On the right side of the image, there is a horizontal blue rectangular box containing white text.

LET'S TALK THROUGH SOME OF THE QUESTIONS
THAT CAME UP.

BUILD A MEASUREMENT PLAN

Annual Administration

- When?

Targeted Administration

- Key areas? When?

Improvement Routines

- Collect, analyze, meet

→ Use the template to capture your plan.

→ When you are ready, share your plan with your elbow partner.





Let's hear from you!

How are you thinking of using this survey?

GIVE US FEEDBACK

- ❖ Would you consider using the NHS Survey. Why or why not?
 - If yes, how do you plan to use it?
 - If not, what would need to change for you to consider it?



STAY CONNECTED

Thank you for improving our work!



RUSSELL WEST, EDD
rwest@newvisions.org



KIRAN PUROHIT, EDD
kpurohit@newvisions.org

GRATEFUL



ANGEL LI, PHD
angli@carnegiefoundation.org



JEN SHERER, PHD
jzsherer@pitt.edu

Thank You

Leading for Network Health: Selecting Tools and Planning Your Improvement Routines



National Coalition for
IMPROVEMENT
IN EDUCATION

AI Transformation: Shaping the Future of Business Operations

[Click here to remove from My Schedule.](#)

Tuesday July 22, 2025 1:00am - 1:15am GMT+08

The Conference Villa @ San Francisco, CA, USA 🌍

Limited Capacity seats available

In today's rapidly evolving business landscape, artificial intelligence (AI) tools have emerged as game-changing assets that are reshaping the way companies operate across a wide array of sectors. These advanced AI tools are designed to mimic human cognitive capabilities, such as learning, problem-solving, and decision-making, resulting in enhanced efficiency, accuracy, and automation. Businesses that integrate AI tools into their operations can streamline processes, enhance customer experiences, and derive valuable insights from vast datasets in real-time. By leveraging machine learning algorithms, natural language processing, and predictive analytics, organizations can optimize their workflows, drive innovation, and stay ahead of the competition in today's dynamic market environment.

AI tools enable companies to make data-informed decisions, automate routine tasks, and tailor interactions with customers at an unprecedented scale. Through the deployment of AI-driven solutions, businesses can uncover new revenue streams, improve operational efficiency, and enhance overall performance in a rapidly changing digital landscape. In summary, the incorporation of AI tools into business strategies has become a crucial cornerstone of success in the modern age, presenting unparalleled opportunities for expansion, creativity, and sustainability.

As companies embrace AI technologies with enthusiasm, they are poised to achieve heightened levels of success and impact in an increasingly competitive, data-centric business world.

Provide Feedback



Please provide your feedback for this session on Sched.

- Click the session you're in.
- A **Provide Feedback button** appears when you click the session title, on the session's detail page, and when you hover over a session title.